

D1EG/DAUS090, 120
 D2CG/DBUC090, 102, 120
 D3CG/DCUC090, 102, 120
 SINGLE PACKAGE AIR CONDITIONERS
 WITH GAS HEAT
 208/230-3-60 (NUMBER/COLOR CODED WIRE)
 380/415-3-50
 460-3-60

035-11236
 REV. A (294)

LEGEND

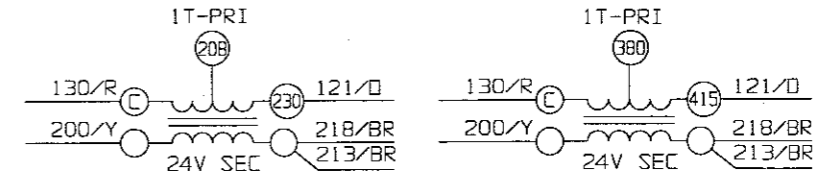
CB CIRCUIT BREAKER
 CCH CRANKCASE HEATER
 CLI COMPR. LOCKOUT INDICATOR LIGHT
 CS CENTRIFUGAL SWITCH ON DRFT MTR
 DMR DRAFT MOTOR RELAY
 LP1-2 CONTROL, LOW PRESSURE
 FS1 & 2 LOW EVAPORATOR TEMPERATURE THERMOSTAT
 GV GAS VALVE
 HP1 & 2 CONTROL, HIGH PRESSURE
 IC IGNITION CONTROL
 K3 COMPR. 1 LOCKOUT RELAY
 K4 COMPR. 2 LOCKOUT RELAY
 K5 BLOWER INTERLOCK RELAY
 LS LIMIT SWITCH
 1M COMPR. 1 CONTACTOR
 2M COMPR. 2 CONTACTOR
 3M CONTACTOR, I.D. FAN
 OR OCCUPIED RELAY
 1RC RUN CAPACITOR, NO.1 D.O. FAN MOTOR
 2RC RUN CAPACITOR, NO.2 D.O. FAN MOTOR
 RS ROLLOUT SWITCH
 1T TRANSFORMER 75VA
 SS SURGE SUPPRESSOR - OPTIONAL

TB1 ROOM THERMOSTAT TERM. BLOCK
 TC1 & 2 THERMOSTAT COOLING
 TD1 & 2 ANTI-SHORT CYCLE TIMER (ACCESS)
 TDR TIME DELAY RELAY
 TH1 & 2 THERMOSTAT HEATING
 S3/P3 SOCKET/PLUG CONNECTION, 24V., 3 PIN
 ON EVAP. PARTITION PANEL
 S4/P4 SOCKET/PLUG CONNECTION, 24V., 208/230V,
 380/415V & 460V ON EVAP. PARTITION PANEL
 S5/P5 SOCKET/PLUG CONNECTION, 24V., 9 PIN
 ON EVAP. COIL BAFFLE
 S6/P6 SOCKET/PLUG CONNECTION, 24V., 16 PIN
 ON RELAY BOARD
 S7/P7 SOCKET/PLUG CONNECTION, 24V., 12 PIN
 ON RELAY BOARD
 ——— FACTORY WIRING & DEVICES
 - - - - - OPTIONAL WIRING & DEVICES
 - - - - - FIELD WIRING
 □ TB1 ON RELAY BOARD
 ⊗ △ ROOM THERMOSTAT 24V CONNECTIONS
 IDENTIFIED TERMINAL ON RUN
 CAPACITOR

NOTES:

- ALL FIELD WIRING PER:
 (A.) NATIONAL ELEC. CODE (NEC) AND/OR
 (B.) CANADIAN ELEC. CODE (CEC) AND/OR
 (C.) LOCAL OR CITY CODES
- DRAFTING PRACTICES & SYMBOLS PER ARI GRAPHIC ELECTRICAL STANDARDS.
- IF ANY OF THE ORIGINAL WIRES AS SUPPLIED WITH THE UNIT MUST BE REMOVED IT MUST BE REPLACED WITH TYPE AWG 105° C 600V WIRE OR EQUIVALENT.
- UNIT WIRED FOR 230V. FOR 208V, MOVE 121/O WIRE TO 208V TERM ON 1T. UNIT WIRED FOR 415V, FOR 380V MOVE 121/O WIRE FROM 415V TERM TO 380V ON 1T.
- WHEN TD1 IS INSTALLED, WIRE 208/BL (P6-7) AND BL (FS1) AT 1M COIL ARE CONNECTED TO TERMINAL 3 OF TD1. WIRE FROM TERMINAL 1 OF TD1 IS CONNECTED TO 1M. WHEN TD2 IS INSTALLED, WIRE 211/O (P6-4) AND BL (FS2) AT 2M COIL ARE CONNECTED TO TERMINAL 3 OF TD2. WIRE FROM TERMINAL 1 OF TD2 IS CONNECTED TO 2M COIL.
- MOTORS ARE INHERENTLY PROTECTED.
- RESISTOR ACROSS S_R & +_R MUST BE INSTALLED FOR SINGLE (OUTSIDE AIR) ENTHALPY CONTROL. RESISTOR IS REMOVED AND DISCARDED WHEN SECOND SENSOR (RETURN AIR) IS INSTALLED.
- SEE UNIT NAMEPLATE FOR MAX. FUSE OR CIRCUIT BREAKER SIZE AND MIN. CIRCUIT AMPACITY.
- REMOVE JUMPER WIRE 270/W IF OCCUPIED SWITCH IS INSTALLED. OTHERWISE JUMPER WIRE MUST BE INSTALLED BETWEEN "A1" AND "A2".
- NOT ALL UNITS WILL HAVE "CCH"
- WHEN ECONOMIZER IS INSTALLED REMOVE PLUG WITH JUMPER WIRES 816/W & 817/R.

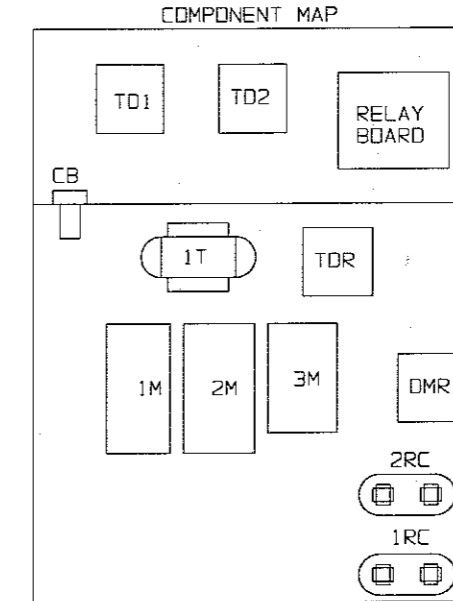
CAUTION - OPEN ALL DISCONNECTS
 BEFORE SERVICING THIS UNIT



208/230V ONLY 380/415V ONLY

DETAIL A
 (SEE NOTE 4)

RELAY TIMING CHART (MAX. TIME)			
SEG	TERM.	DELAY ON	DELAY OFF
TDR	M1-M2	20-45 SECONDS	20-60 SECONDS
	M3-M4	1-30 SECONDS	40-80 SECONDS

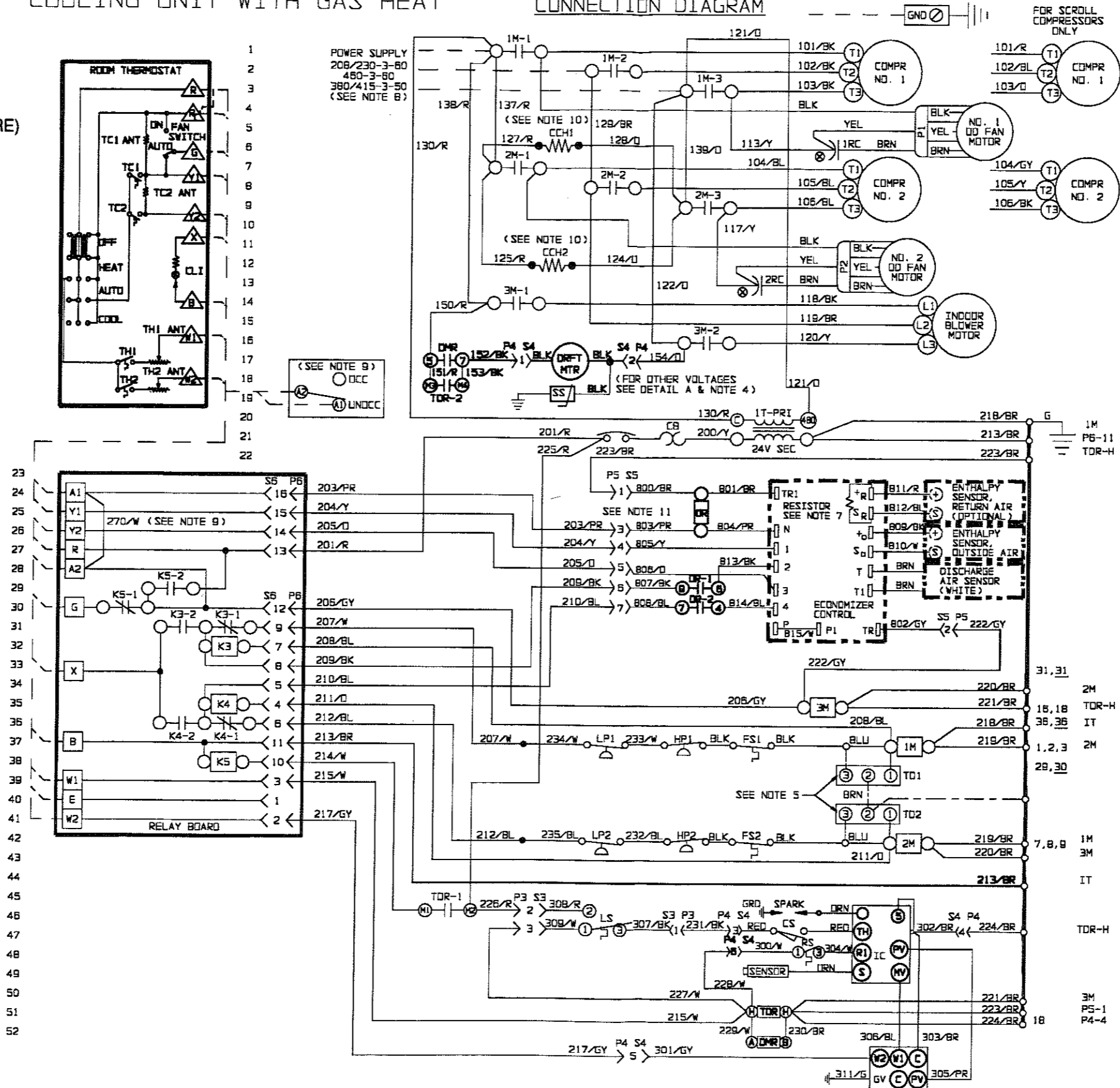


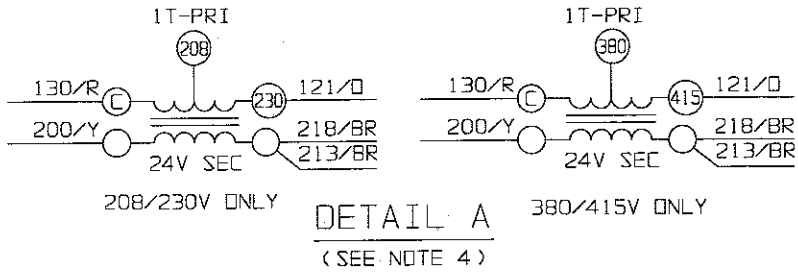
D1EG/DAUS090, 120
 D2CG/DBUC090, 102, 120
 D3CG/DCUC090, 102, 120
 SINGLE PACKAGE
 AIR CONDITIONERS
 WITH GAS HEAT
 208/230-3-60
 380/415-3-50
 460-3-60
 (NUMBER/COLOR CODED WIRE)

035-11236
 REV. A (294)

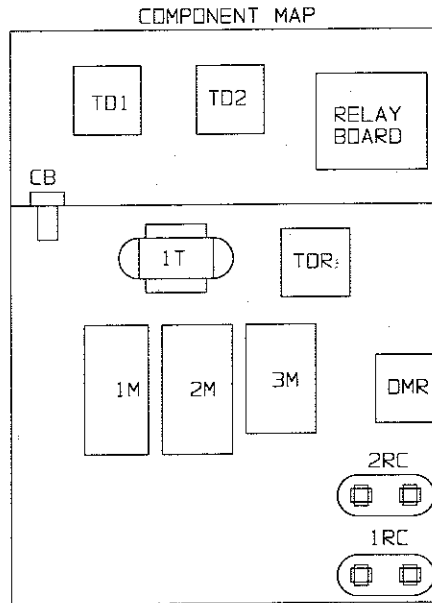
COOLING UNIT WITH GAS HEAT

CONNECTION DIAGRAM





RELAY TIMING CHART (MAX. TIME)			
SEQ	TERM.	DELAY ON	DELAY OFF
TDR	M1-M2	20-45 SECONDS	20-60 SECONDS
	M3-M4	1-30 SECONDS	40-80 SECONDS



D1EG/DAUS090, 120
D2CG/DBUC090, 102, 120
D3CG/DCUC090, 102, 120
SINGLE PACKAGE AIR CONDITIONERS
WITH GAS HEAT
208/230-3-60 (NUMBER/COLOR CODED WIRE)
380/415-3-50
460-3-60

035-11236
REV. A (294)

LEGEND

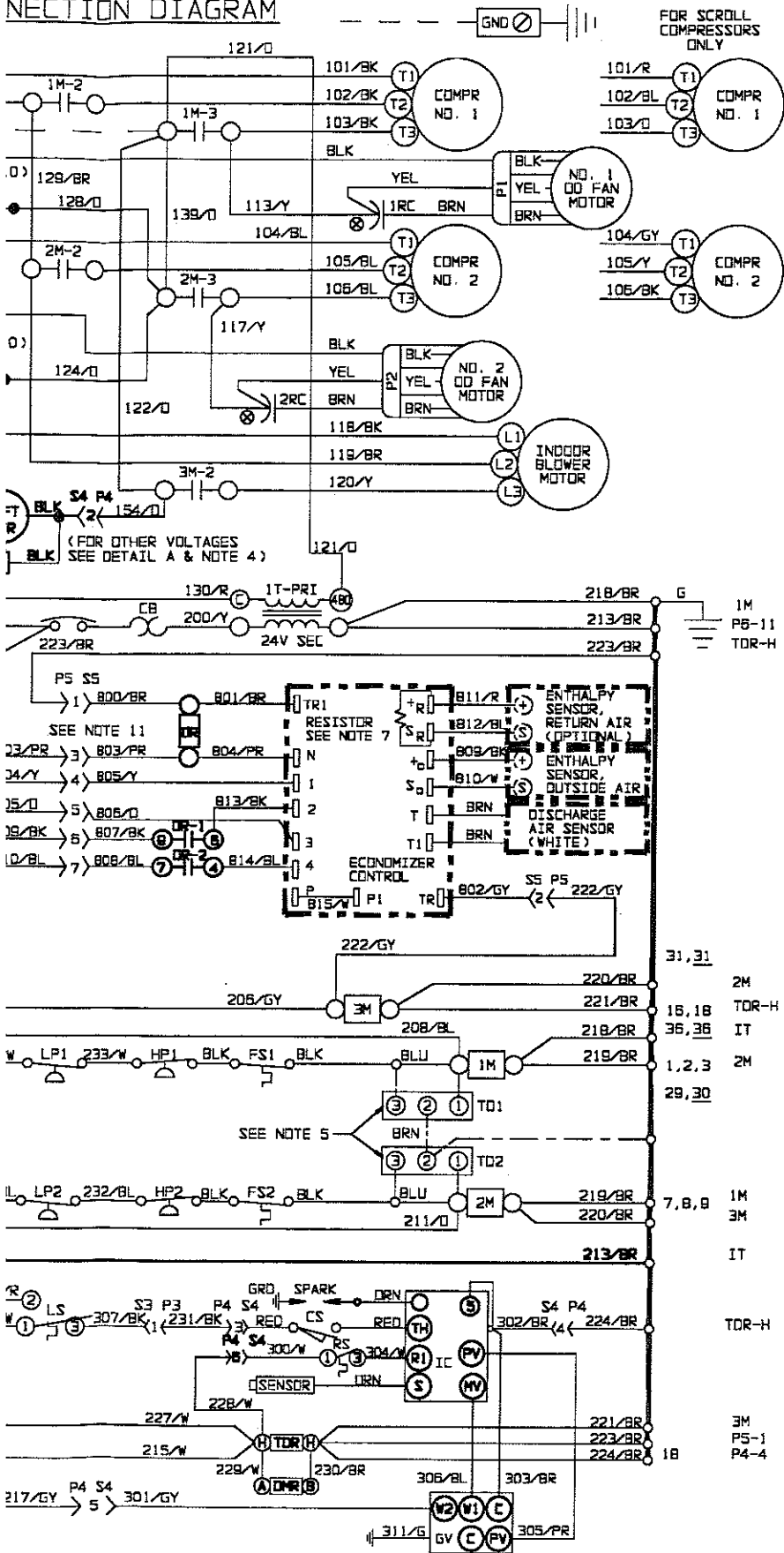
CB	CIRCUIT BREAKER	TB1	ROOM THERMOSTAT TERM. BLOCK
CCH	CRANKCASE HEATER	TC1 & 2	THERMOSTAT COOLING
CLI	COMPR. LOCKOUT INDICATOR LIGHT	TD1 & 2	ANTI-SHORT CYCLE TIMER (ACCESS)
CS	CENTRIFUGAL SWITCH ON DRFT MTR	TOR	TIME DELAY RELAY
DMR	DRAFT MOTOR RELAY	TH1 & 2	THERMOSTAT HEATING
LP1-2	CONTROL, LOW PRESSURE	S3/P3	SOCKET/PLUG CONNECTION, 24V., 3 PIN ON EVAP. PARTITION PANEL
FS1 & 2	LOW EVAPORATOR TEMPERATURE THERMOSTAT	S4/P4	SOCKET/PLUG CONNECTION, 24V., 208/230V, 380/415V & 460V ON EVAP. PARTITION PANEL
GV	GAS VALVE	S5/P5	SOCKET/PLUG CONNECTION, 24V., 9 PIN ON EVAP. COIL BAFFLE
HP1 & 2	CONTROL, HIGH PRESSURE	S6/P6	SOCKET/PLUG CONNECTION, 24V., 16 PIN ON RELAY BOARD
IC	IGNITION CONTROL	S7/P7	SOCKET/PLUG CONNECTION, 24V., 12 PIN ON RELAY BOARD
K3	COMPR. 1 LOCKOUT RELAY	—————	FACTORY WIRING & DEVICES
K4	COMPR. 2 LOCKOUT RELAY	-----	OPTIONAL WIRING & DEVICES
K5	BLOWER INTERLOCK RELAY	- - - -	FIELD WIRING
LS	LIMIT SWITCH	□	TB1 ON RELAY BOARD
1M	COMPR. 1 CONTACTOR	⊗	ROOM THERMOSTAT 24V CONNECTIONS
2M	COMPR. 2 CONTACTOR	△	IDENTIFIED TERMINAL ON RUN CAPACITOR
3M	CONTACTOR, I.D. FAN		
OR	OCCUPIED RELAY		
1RC	RUN CAPACITOR, NO.1 D.D. FAN MOTOR		
2RC	RUN CAPACITOR, NO.2 D.D. FAN MOTOR		
RS	ROLLOUT SWITCH		
1T	TRANSFORMER 75VA		
SS	SURGE SUPPRESSOR - OPTIONAL		

NOTES:

1. ALL FIELD WIRING PER:
 - (A.) NATIONAL ELEC. CODE (NEC) AND/OR
 - (B.) CANADIAN ELEC. CODE (CEC) AND/OR
 - (C.) LOCAL OR CITY CODES
2. DRAFTING PRACTICES & SYMBOLS PER ARI GRAPHIC ELECTRICAL STANDARDS.
3. IF ANY OF THE ORIGINAL WIRES AS SUPPLIED WITH THE UNIT MUST BE REMOVED IT MUST BE REPLACED WITH TYPE AWG 105° C 600V WIRE OR EQUIVALENT.
4. UNIT WIRED FOR 230V. FOR 208V, MOVE 121/D WIRE TO 208V TERM ON 1T. UNIT WIRED FOR 415V, FOR 380V MOVE 121/D WIRE FROM 415V TERM TO 380V ON 1T.
5. WHEN TD1 IS INSTALLED, WIRE 208/BL (P6-7) AND BL (FS1) AT 1M COIL ARE CONNECTED TO TERMINAL 3 OF TD1. WIRE FROM TERMINAL 1 OF TD1 IS CONNECTED TO 1M. WHEN TD2 IS INSTALLED, WIRE 211/D (P6-4) AND BL (FS2) AT 2M COIL ARE CONNECTED TO TERMINAL 3 OF TD2. WIRE FROM TERMINAL 1 OF TD2 IS CONNECTED TO 2M COIL.
6. MOTORS ARE INHERENTLY PROTECTED.
7. RESISTOR ACROSS S_R & T_R MUST BE INSTALLED FOR SINGLE (OUTSIDE AIR) ENTHALPY CONTROL. RESISTOR IS REMOVED AND DISCARDED WHEN SECOND SENSOR (RETURN AIR) IS INSTALLED.
8. SEE UNIT NAMEPLATE FOR MAX. FUSE OR CIRCUIT BREAKER SIZE AND MIN. CIRCUIT AMPACITY.
9. REMOVE JUMPER WIRE 270/W IF OCCUPIED SWITCH IS INSTALLED. OTHERWISE JUMPER WIRE MUST BE INSTALLED BETWEEN "A1" AND "A2".
10. NOT ALL UNITS WILL HAVE "CCH"
11. WHEN ECONOMIZER IS INSTALLED REMOVE PLUG WITH JUMPER WIRES 816/W & 817/R.

CAUTION - OPEN ALL DISCONNECTS
BEFORE SERVICING THIS UNIT

NECTION DIAGRAM



D1EG/DAUS090, 120
 D2CG/DBUC090, 102, 120
 D3CG/DCUC090, 102, 120
 SINGLE PACKAGE
 AIR CONDITIONERS
 WITH GAS HEAT

208/230-3-60
 380/415-3-50
 460-3-60

(NUMBER/COLOR CODED WIRE)

035-11236
 REV. A (294)

COOLING UNIT WITH GAS HEAT

CONNECTION

